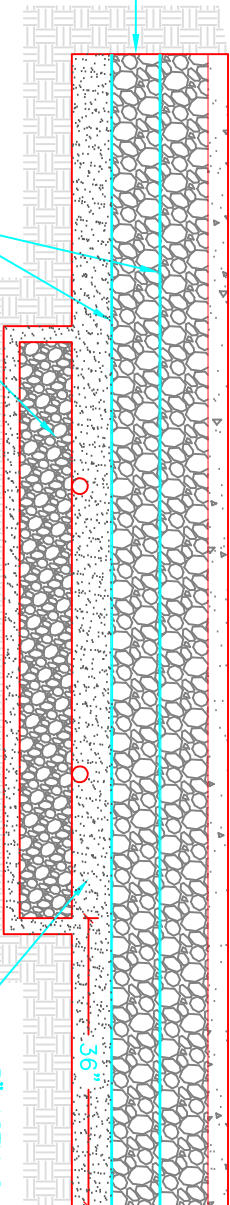


MINIMUM 6" CRUSHED AGGREGATE FILL - MAXIMUM PARTICLE SIZE OF 1.5" AND LESS THAN 10% FINES PASSING #200 SIEVE (LOOSELY ROLLED). SEE TABLE 1 FOR PREFERRED FILL GRADATION

MINIMUM OF 2-1/2" BITUMINOUS CONCRETE OR CRUSHED AGGREGATE FILL



BI-AXLE GEOGRID TENSAR BX 1100 OR EQUAL MUST EXTEND 36" BEYOND SYSTEM FOOTPRINT  
GeoU672 LEACHING SYSTEM

| SIZE   | % PASSING    |
|--------|--------------|
| 1-1/2" | 100          |
| 3/4"   | 50-100       |
| #4     | 25-50        |
| #40    | 10-20        |
| #100   | 5-15         |
| #200   | LESS THAN 10 |

5" ASTM C-33 SAND OR APPROVED EQUIVALENT LOOSELY ROLLED OR EQUIVALENTLY COMPACTED NATIVE MATERIAL

MINIMUM 6" CRUSHED AGGREGATE FILL - MAXIMUM PARTICLE SIZE OF 1.5" AND LESS THAN 10% FINES PASSING #200 SIEVE (LOOSELY ROLLED).

# GeoMat Edge U-Shape Leaching System

Geomatrix Systems, LLC  
114 Mill Rock Road East  
Old Saybrook, CT 06475  
(860) 510-0730

## GeoU672 H-20 LOADING

SCALE: 1"=2'

SCALE: 1"=2'  
0 1 2 4 FEET

|              |          |            |                           |
|--------------|----------|------------|---------------------------|
| DATE:        | 2/2/2011 | REVISIONS: |                           |
| DRAWN BY:    | SMM      | ACAD NO.:  | GEOU 672 H-20 LOADING.DWG |
| APPROVED BY: |          | SHEET NO.: | 1 OF 1                    |